



India

NAGALAND'S HORNBILL FESTIVAL AND BRAHMAPUTRA EXPEDITION

GUWAHATI TO KOHIMA - 13 NIGHTS

Circular

Nagaland is known as the land of festivals and each December, the Hornbill Festival takes place in Kohima uniting the various Naga tribes for a yearly celebration of the culture and traditions of the region. Famed for its fierce and distinct Naga Warriors, Nagaland is a must-see for travellers in India's North East and for the first time Pandaw is offering a guided tour of this unique annual celebration, combined with a 7 night expedition along the mighty Brahmaputra River.

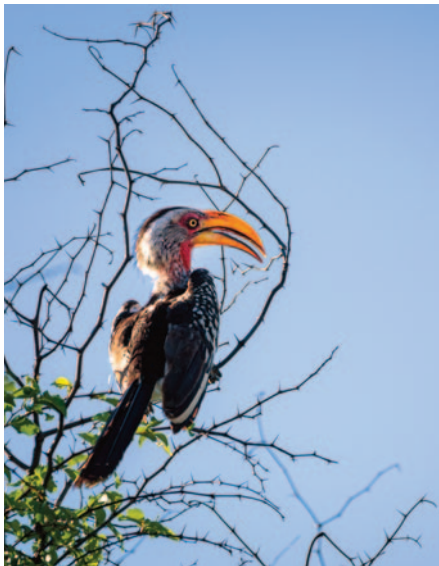
We have 2 special departures sailing on the 22nd November 2025 & 29th November 2025, the perfect way to experience the once-in-a-lifetime festival and experience North East India with Pandaw.

This is a group tour exploring the Hornbill Festival across multiple days after a 10-night Brahmaputra expedition. Transportation to and from the festival site and excursions each day are provided as a group by coach or car but our local guides and vehicles will be on hand to support those who wish to return early. This is a flexible tour which may change depending on specific festival activities at time of visit or group consensus.



[VIEW ONLINE](#)

CONTENTS



Route Map p.03

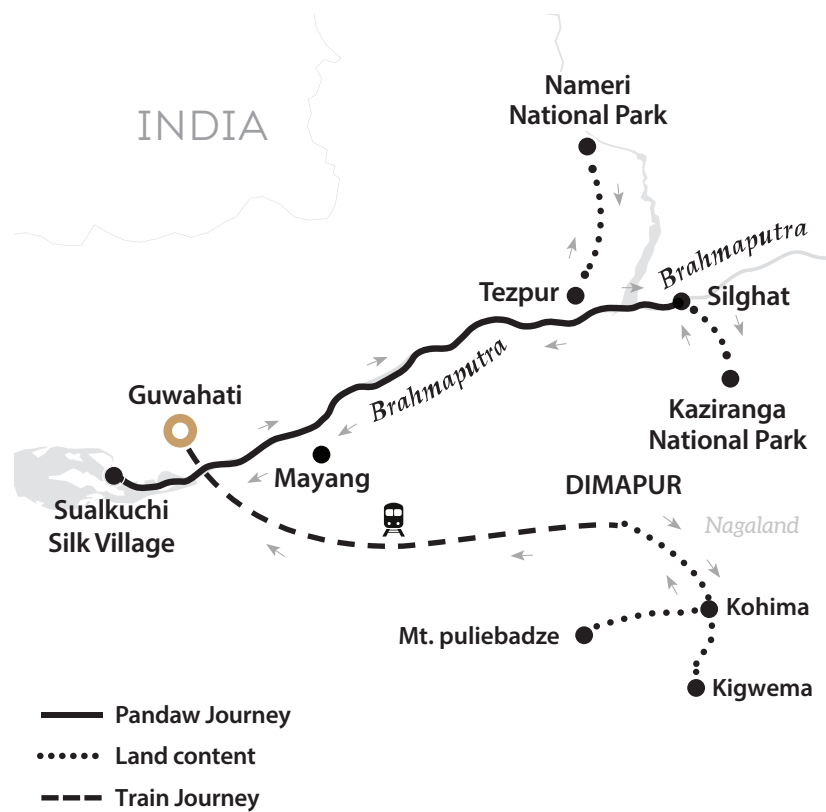
Itinerary p.04

Pandaw Stateroom p.09

Ships - RV Kindat Pandawp.10

Pre Toursp.11

ROUTE MAP



ITINERARY



DAY 1 **GUWAHATI**

Arrive in Guwahati and transfer to the RV Kindat Pandaw or from the your hotel in the morning. At 2pm, we cast off from Pandu Port and begin our journey upstream. Learn about the Brahmaputra River with a talk from our knowledgeable guide. Enjoy a cocktail hour with canapes. We anchor near Mayong for the night.



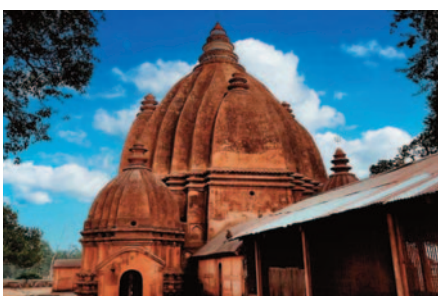
DAY 2 **SAILING**

Spend the day sailing against the strong currents of the Brahmaputra River, making your way through the lush Assam countryside. Take advantage of the onboard activities and lectures to learn more about the region's fascinating culture and history.



DAY 3 **SILGHAT & VILLAGE WALK**

Arrive in Silghat and disembark for a leisurely walk through a typical Assamese village, experiencing the daily life and traditions of the friendly locals. In the evening, enjoy a captivating performance of traditional Assamese folk dances like the Jhumur and Bihu.



DAY 4 **KAZIRANGA NATIONAL PARK**

Embark on a thrilling jeep safari through the renowned Kaziranga National Park, a UNESCO World Heritage site. This wildlife haven boasts the world's largest population of the Indian One-Horned Rhinoceros and a high density of Royal Bengal Tigers, though sightings of these elusive creatures are rare. Keep an eye out for other fascinating wildlife like Indian elephants, bison, swamp deer, and a variety of bird species as you traverse the park's diverse landscape.



ITINERARY



DAY 5 **NAMERI NATIONAL PARK & BAMUNI HILLS**

After an early breakfast, embark on an exciting adventure to Nameri National Park, nestled at the foot of the blue hills of Arunachal Pradesh. Take a relaxing float trip down the Jia-Bhoreli River, spotting diverse birdlife and soaking in the breathtaking scenery. Later, journey to Bamuni Hills to marvel at the ancient rock carvings dating back to the 8th century, offering a glimpse into the artistic heritage of the region.



DAY 6 **MAYONG VILLAGE**

Step ashore in Mayong Village, shrouded in mystique and known for its long-standing association with magic and sorcery. Delve into the intriguing history of this unique village, learning about ancient mantras and their uses in everything from healing to identifying thieves. You might even witness a captivating magic demonstration by a local resident. Later, continue sailing downstream, enjoying the ever-changing scenery and onboard activities.



DAY 7 **SUALKUCHI & TEA GARDEN**

Rise early for a visit to the Noonmati Tea Garden, where you'll witness the fascinating process of tea production, from plucking the leaves to the final stages of drying and packaging. After lunch, sail to Sualkuchi, a major center for silk production in Assam. Discover the intricate art of silk-making, from the delicate silkworms spinning their cocoons to the skilled weavers creating exquisite sarees worn by local women.



ITINERARY



DAY 8 **GUWAHATI - KOHIMA**

Early disembarkation from the ship in Guwahati and bid farewell to the majestic Brahmaputra River as you transfer to the train station for your 6:20am departure to Dimapur on the Jansatabdi Express. Meet your guide at 10:15am and transfer by coach to Kohima. Enjoy a welcome lunch en route (Approx 2.5 - 3.5h journey time). In the afternoon, enjoy some free time to settle in. In the evening, attend an engaging talk by your expert guide on the Battles of Kohima and Imphal from World War II's Burma Campaign. Enjoy a welcome dinner and spend the night in Kohima.

Overnight in Kohima

Meals: Packed Breakfast, Lunch, Dinner



DAY 9 **KOHIMA**

Explore the historic Kohima Ridge in the morning, visiting key sites from the iconic Battle of Kohima, often referred to as the "Stalingrad of the East." Visit the serene Kohima War Cemetery, a poignant tribute to the soldiers who fought bravely. After lunch, visit the Kohima Cathedral, a stunning landmark and a symbol of peace. Spend the night in Kohima.

Overnight in Kohima

Meals: Breakfast, Lunch



DAY 10 **KOHIMA & KHONOMA**

In the morning, visit the Nagaland State Museum, exploring the fascinating culture and traditions of the Naga tribes through an impressive collection of artefacts and costumes. After lunch, visit Khonoma, India's first "Green Village" and home to the Angami tribe. Enjoy a picnic lunch amidst the picturesque surroundings. Take a guided walk through the village, exploring Morungs (age-group houses), ancient forts, ceremonial gates, and experiencing the unique Angami way of life. Spend the night in Kohima.

Overnight in Kohima

Meals: Breakfast, Lunch



ITINERARY



DAY 11 **HORNBILL FESTIVAL, KISAMA**

Head to Kisama Heritage Village, the vibrant hub of the Hornbill Festival, often called the "Festival of Festivals." Immerse yourself in the cultural extravaganza: Watch mesmerizing tribal performances, explore traditional Naga houses and engage with the rich heritage on display, sample local delicacies and enjoy indigenous brews, and witness thrilling indigenous games. Spend the night in Kohima.



Overnight in Kohima
Meals: Breakfast, Lunch

DAY 12 **HORNBILL FESTIVAL, KISAMA**

Continue to experience the vibrant atmosphere of the Hornbill Festival. Explore the kaleidoscope of tribal life, from vibrant attire to the rhythmic beats of traditional music and dances. Discover hidden gems in the lively market stalls. Spend the night in Kohima.



Overnight in Kohima
Meals: Breakfast, Lunch



DAY 13 **MOUNT PULIEBADZE**

Hike to the summit of Mount Puliebadze (2,300m), offering breathtaking views of Kohima. For those who prefer not to hike, an additional visit to the festival venue can be arranged. Enjoy a local lunch at the base of the mountain. Free time to relax and soak in the atmosphere of Kohima. Spend the night in Kohima.

Overnight in Kohima
Meals: Breakfast, Lunch



DAY 14 **DEPARTURE**

After breakfast and check-out from your hotel, transfer to Dimapur for your onward journey.

Meals: Breakfast

WHATS INCLUDED

Cruise Price Includes: Land - Hotels and meals off ship as noted. Entrance to the Hornbill Festival, transfers and expert guides. 1-way 2nd class train ticket from Dimapur to Guwahati, all taxes and fees. Onboard - Meals onboard your ship from lunch on embarkation to breakfast before disembarkation, transfer to/from Ship, entrance fees, guide services (English language), gratuities to crew, main meals, local mineral water, jugged coffee, teas & tisanes plus our India complimentary drinks package.

Meals Included: Breakfast, Lunch & Dinner is included on your Pandaw cruise. Land tour includes meals as follows; Day 8: Lunch & Dinner, Day 9: Breakfast & Lunch, Day 10: Breakfast & Lunch, Day 11: Breakfast & Lunch, Day 12: Breakfast & Lunch, Day 13: Breakfast & Lunch, Day 14: Breakfast.

Cruise Price Excludes: Land - Flights, laundry, Indian visa costs, meals and drinks not noted on the itinerary, Insurance, personal expenses, tipping for guides and service providers, any special phot/video permits required. Onboard - fuel surcharges (see terms and conditions), all beverages except local mineral water, jugged coffee, teas & tisanes, tipping for cruise guide and drivers.

Note: We suggest to change money at a bank at the international airport before exiting.

Hotels offered in Kohima will be booked based on availability due to high demand during the festival. All guests may not be staying in the same hotel. If you have any special requests for your hotel please inform us at time of booking and note these may not be possible due to the festival. La Colline Resort Kohima or Similar.

TRANSFERS & JOINING

DAY 1 GUWAHATI

Transfer from your hotel or airport in Guwahati to your Pandaw vessel.

Please note flight arrival should be before 12.00 for 14:00 cast off.

PANDAW STATEROOMS

The Pandaw stateroom is the most celebrated feature of our ships, combining splendid colonial-era character with exquisite contemporary comfort.

Finished in brass and teak, the main and upper deck rooms are a spacious 168 square feet (15.6 sqm), with the exception of the RV Kindat Pandaw which is 150 square feet (14 sqm). As the space is much loved by all our passengers, we have ensured that with each ship we build, the stateroom remains essentially the same. Be advised: our cabins do not have mini-bars, satellite TV's, internet access or telephones. Passengers tend to choose Pandaw in order to escape from the tiresome features found in international business hotels.



- Fruit and flowers on arrival
- Kimonos and slippers
- Spa-branded amenities
- Unlimited mineral water

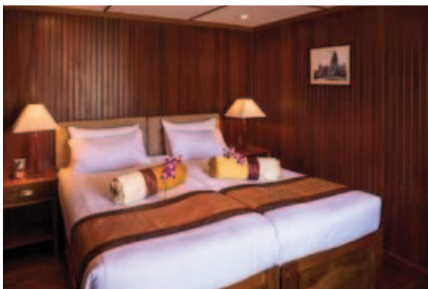
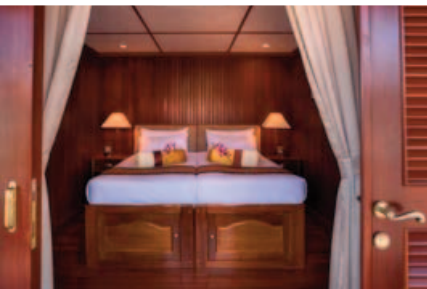
Bedroom	12' x 10'
Bathroom	6' x 4'
Showeroom	2' 8" x 3' 4"
Single Bed	6' 7" x 3' 3"



DOUBLE CONFIGURATION



TWIN CONFIGURATION



PANDAW SHIPS

RV Kindat Pandaw

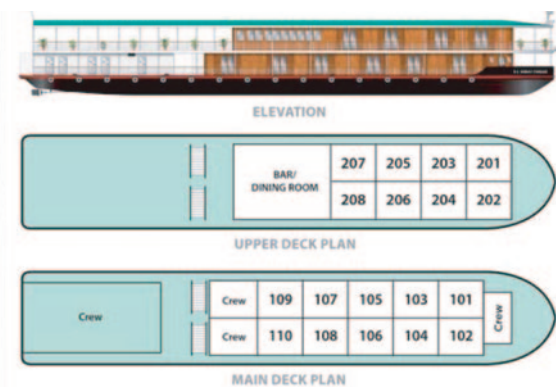
The original Kindat was built in 1886 by Yarrows in London and sank in 1920. She was named after a small Upper Chindwin town. Following experiments with the Katha and Angkor Pandaws, in this build we perfected this concept of a two deck shallow draft vessel and repeated the formula again with her sister the Kalaw.

What we managed to produce in 2014 was a very shallow draft vessel that could go just about anywhere anytime that was big enough to carry 30-40 passengers with lots of outdoor deck space. We did this by reducing weight and stripping both hull and superstructure down to the bare essentials.

We had found with the experimental Katha that about half our passengers want to eat outside and the other half inside so we created a flexible bistro space offering passenger indoor or outdoor dining depending on inclination, often prompted by the season. This makes for a very happy ship!

The ship has quality mountain bikes for your independent exploration.

[view images of RV Kindat PANDAW](#)



- **Build:** Built in 2014 in Yangon
- **Length:** 187ft / 57m
- **Beam:** 29ft / 8.8m
- **Draft:** 3ft / 90
- **Berths:** 48 pax

ACCOMMODATION

- 8 upper deck staterooms and 10 main deck staterooms
- 170 square feet, finished in teak and brass
- Panoramic French window, leading to personal deck space
- New bathrooms with natural stone shower and branded quality fittings
- Kimonos and slippers
- Spa-branded amenities
- Unlimited mineral water
- Electric mini safe
- Central AC with individual control
- Imported quality linens with duvet and two kind of pillows
- Premium mattresses
- Convertible bed configuration
- Welcome flower arrangement and welcome gift
- Mirror
- Multi-configuration plugs
- Generous closet space and under-bed storage
- Hair dryer
- Nightly turndown service
- 24h laundry service
- Complimentary evening canapés
- Yoga mats in all cabins

WINING & DINING

- Bistro style dining room with outside seating and air-conditioning inside
- Local master chef heading an experienced international culinary team
- Semi-buffet breakfast, Semi-buffet lunch, and seated theme dinners
- Daily lean & light menu options
- Complimentary local mineral water, juggled coffee, teas & tisanes
- Extensive wine list with premium wines
- Series of cultural performances, educational talks, cooking classes, and ship tour
- Welcome drink on arrival
- Welcome cocktail
- Farewell reception
- Theme dinners
- Spacious, air-conditioned saloon bar with nightly entertainment
- Sundeck bar
- Pool table on sundeck
- 24hrs hospitality bar
- Onboard bakery with daily freshly baked breads and rolls

ON EXCURSIONS

- Admissions
- Shoe cleaning after excursions
- Bottled drinking water
- We give away aluminium water bottles
- Cold towel service after excursions
- Refreshing drink following excursions
- Full-size motor coach on all excursions
- Deluxe sampans with cold towel service, fresh fruit, and tea/coffee
- Comfortable "Pandaw Explorer" excursion boat
- 1st aid trained assistant guide to follow all tours and excursions

SAFETY & SECURITY

- All onboard crew is trained and certified as per international marine standards (VIREs)
- Fire alarm system in all cabins, public areas and back areas
- Firefighting system in all ship areas
- Expert marine superintendent
- 24 hrs watch on duty

ONBOARD STAFF

- Captain
- First Officer
- River Pilot
- Chief Engineer
- 1st Engineer
- Electrician
- Bosun & nautical crew
- Ship manager
- Housekeeping
- Dining
- Bar keeper
- Chefs
- Local tour guides

PUBLIC SPACES

- Guest relation desk
- Library with contemporary and classic literature

PRE EXTENSIONS

Pre Bookable via Pandaw.com as add on

Pre Tour

ANCIENT KINGDOM OF BHUTAN & KOLKATA 6 NIGHTS

Combine your Pandaw river expedition with a visit to the ancient Kingdom of Bhutan, one of the world's most intriguing countries. Discover Bhutan's famous cliff-top monasteries, soaring mountain peaks and unique way of life.

This is a private tour.

Medium fitness is required for a soft hike on day 5.



DAY 1 ARRIVAL PARO

Welcome to Bhutan! Upon arrival you will be met by your local guide and offered a Tashi Khaddar – a traditional way to greet guests to Bhutan. We then drive to Thimpu, the capital city of Bhutan through the scenic Paro Valley, around 4 hours total. Upon arrival to Thimpu, check into your hotel before beginning your Bhutan adventure with a visit to the National Memorial Chorten. This prominent landmark serves as an ideal spot for engaging with locals who flock here to circumambulate the chorten, spin the large red prayer wheels, and offer their prayers at a small shrine within the complex. Before heading back to your hotel, take a leisurely stroll around Thimpu's main street and markets soaking in the vibrant atmosphere.

DAY 2 THIMPU

Following breakfast, make a brief drive north of the town to reach Buddha Dordenma, situated atop a hill within the serene Kuenselphodrang Nature Park. This remarkable statue brings to life an ancient prophecy originating from the 8th century A.D., which was unearthed by Tertön Pema Lingpa, a discoverer of religious treasures. It is believed that this statue emits an aura of tranquillity and joy, extending its influence to the entire world. Afterwards we take a short hike to Changangkha Lhakhang, an easy walk of around 1.5 hours where you will be greeted by a magnificent sight of hundreds of prayer flags waving in the breeze, creating a colourful and spiritual welcome. After visiting the temple at the end of the hike, we head towards The Postal Museum to see Bhutan's collection of rare and unique stamps. After lunch we continue on the highlights tour of Thimpu with visits to the Textile Museum, Centenary Farmers Market and Zilkha Nunnery before ending the day at Trashichhoedzong, often referred to as the 'fortress of the glorious religion.' This remarkable edifice serves as the heart of both government and religion in Bhutan, housing the monarch's throne room and serving as the seat of the Je Khenpo, or Chief Abbot. Return to your hotel to unwind for the evening.

CONT'D

PRE EXTENSIONS

Pre Bookable via Pandaw.com as add on

DAY 3 THIMPUTHIMPU - PUNAKHA

Following breakfast, we will journey up to the picturesque Dochu-la pass, standing at an elevation of 3,088 meters. Here, we'll pause briefly to relish the panoramic views and appreciate the adorned chorten, mani wall, and fluttering prayer flags that adorn this high-altitude vantage point. We will witness a traditional prayer flag hoisting ceremony at Dochula before continuing our journey towards Punakha.

After a delightful lunch, we will visit the majestic Punakha Dzong, often referred to as the 'Palace of Great Happiness.' Following the dzong visit, we'll embark on a short excursion to Chimi Lhakhang, perched on a hillock in the heart of the valley and widely known as the "temple of fertility." It's believed that couples seeking to conceive a child can receive blessings here, often resulting in the fulfilment of their wish. The trail takes you across rice fields to the charming settlement of Pana, which translates to 'field.' Exploring the village near the temple offers unique glimpses into the daily life and traditions of the local villagers.

In the evening, enjoy a leisurely stroll in and around Punakha town.

DAY 4 PHUNAKA – PARO

After breakfast drive along the scenic highway to Paro before checking into your hotel. In the afternoon we will visit Ta Dzong, initially constructed as a watchtower and now housing the National Museum. The museum boasts an extensive collection that includes antique thangkha paintings, textiles, weaponry and armor, household artifacts, and a diverse assortment of natural and historical treasures. The Ta Dzong visit will be immediately followed by a short walk along the trail leading to Rinpung Dzong, also known as Paro Dzong, which translates to the "fortress of the heap of jewels." This dzong boasts a long and captivating history. Along the wooden galleries that line the inner courtyard, you'll find exquisite wall paintings depicting Buddhist tales, such as the four friends, the old man of long life, the wheel of life, scenes from the life of Milarepa, Mount Sumeru, and cosmic mandalas.

In the evening, we'll head to Dema Farmhouse for a delightful dinner. At the farmhouse, you'll have the opportunity to experience Bhutan's national sport, archery, and immerse yourself in the local rural culture. Bhutanese farmhouses are renowned for their vibrant colors, intricate decorations, and their traditional construction methods, which eschew the use of a single nail. The majority of Bhutan's population still maintains a way of life that has endured for centuries, residing in modest, secluded farms and hamlets, enveloped by terraced fields of rice, maize, and buckwheat.

DAY 5 TAKTSANG MONESTARY

Drive to Satsam Chorten for a soft hike to Taktsang Monastery, also known as Tiger's Nest. The monastery is perched on a rocky ledge with a sheer drop of nearly 800m, overlooking the Paro Valley and the river. Recognized as one of the most hallowed places, it was visited by Zhabdrung Ngawang Namgyal in 1646 and is a must-visit for all Bhutanese at least once in their lifetime. The hike takes 4-5 hours round trip. While en route back to Paro town, make a stop at the 7th century Kyichu Lhakhang, one of the 108 temples constructed in the Himalayas by Tibetan King Songtsen Gampo. The establishment of this temple marks the introduction of Buddhism in Bhutan.

This evening, take part in a traditional blessing & butter lamp ceremony at a village monastery. This is a sacred and deeply spiritual practice that holds significant importance in the country's Buddhist culture. Such ceremonies are often conducted in monasteries, temples, and sacred sites, attracting devotees seeking blessings, protection, and spiritual guidance. During the blessing ceremony, Buddhist monks, adorned in their vibrant robes, recite powerful prayers and mantras, invoking the blessings of Buddha and other enlightened beings. While lighting of butter lamps is a symbolic act representing the illumination of wisdom and dispelling darkness or ignorance.

CONT'D

PRE EXTENSIONS

Pre Bookable via Pandaw.com as add on

DAY 6 PARO - KOLKATA

After breakfast transfer Paro International Airport for your flight to Kolkata. Free time in the evening to relax.

DAY 7 DEPARTURE

After breakfast, transfer to your ship.

Le Meridien, Thimphu

Located in the heart of the capital city, Thimphu, the Le Méridien Thimphu invites the discerning guest to engage and discover the legendary 'Land of the Thunder Dragon', Bhutan. The 78 spaciouly appointed guest rooms & suites are culturally inspired, yet decidedly chic and contemporary. With cosmopolitan surroundings amidst the bustling commercial streets of the city-centre, and a convenient location to many of the city's myriad attractions, the Le Méridien Thimphu is the perfect jumpstart to that long awaited leisurely holiday.

Classic Room

Chorten Lam, P.O. Box 01286, Thimphu, Kingdom of Bhutan

Tel: +975 2 337788

[Visit Hotel Website](#)



Dhensa Resort, Punakha

Dhensa Boutique Resorts sits in the heart of the verdant and lush Punakha Valley. Flanked by thick pine forests, it overlooks the Punakha river and hundreds of paddy fields that stair-step down to the valley floor. It is surrounded by plentiful walking and trekking trails. From Dhensa Punakha, it is just a five-minute trek up the mountain to the magnificent Sangchhen Dorji Lhuendrup Lhakhang Nunnery, which houses one of the biggest bronze statues of Chenrigzig (Avalokiteshvara) in the country. Dhensa Punakha marries contemporary design with this Himalayan Kingdom's ancient and alluring ways. At the core of the Dhensa Punakha philosophy lies the sense of innocence and peace that permeates everything about Bhutan.

Suite Room

Wolakha, Punakha, Bhutan

Tel: +975 2 337788

[Visit Hotel Website](#)



CONT'D

PRE & POST EXTENSIONS

Pre & Post Bookable via Pandaw.com as add on

Zhiwaling Heritage, Paro

Escape the ordinary and immerse yourself in the genuine warmth and comfort of Zhiwaling Heritage, a 5-star hotel seamlessly integrated with nature, culture, and tradition. Nestled in the charming valley of Paro, Zhiwaling Heritage offers a truly exceptional experience, enhancing every aspect of your trip.

Satsam Chorten, Paro, Kingdom of Bhutan

Tel: +975 2 336486

[Visit Hotel Website](#)



Taj Bengal Hotel

Located within walking distance of the Victoria Memorial and the Zoological Gardens, the elegant 5* Taj Bengal Hotel is the perfect base to start your India adventure.

Your Hotel

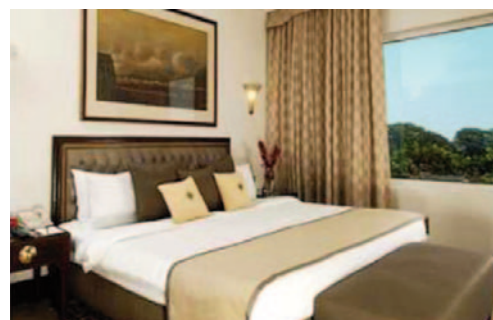
One of the best places to stay in Kolkata. Public areas include several superb restaurants, outdoor swimming pool, spa and elegant lounges where you can relax after a days sightseeing.

Your Deluxe Room

The beautifully appointed deluxe en suite rooms include mini bar, tea/coffee making facilities, safe and wireless internet.

34B, Belvedere Road, Alipore – 700 027, Kolkata (Calcutta), India

Tel: +91 33 66123939



Rates include

Bhutan tourism visa, Bhutan Sustainable Development Tax, Six nights accommodation at advertised hotels (or similar based on availability), including breakfast and meals as advertised, excursion and entrance fees as per itinerary, one flight Paro – Kolkata including check-in luggage of 20kg, entrance fees and taxes. Transportation by 7 seat Hyundai Sante Fe or similar

Meals included

Land tour includes meals as follows; Day 1: Dinner at your hotel, Day 2: Breakfast, Lunch & Dinner, Day 3: Breakfast, Lunch & Dinner, Day 4: Breakfast, Lunch & Dinner, Day 5: Breakfast, Lunch & Dinner, Day 6: Breakfast at hotel, Day 7: Breakfast at hotel.

CONT'D

PRE EXTENSIONS

Pre Bookable via Pandaw.com as add on

Pre Tour

INDIA'S GOLDEN TRIANGLE

Explore India's 'Golden Triangle,' three of the most iconic cities in India on this curated 6-night extension tour to your Pandaw Expedition. Taking in the delights of India's capital, New Delhi, the unmissable Taj Mahal at Agra, and the pink city of Jaipur, this is the perfect tour to complement a Ganges or Brahmaputra river expedition and complete your grand tour of India.



This is a private tour.

DAY 1 ARRIVAL NEW DELHI

Welcome to India! Transfer from airport to your hotel. Rest of day at leisure.

Rest of day at leisure.

DAY 2 CITY TOUR OF DELHI

We start our exploration in India with a Heritage Walk around Delhi with a twist. The tour will be guided by former street children who have overcome adversity thanks to the work of Salaam Baalak Trust. We visit India's largest Mosque 'Jama Masjid' built in 1644 AD showcasing finest Islamic style of architecture and explore real life of Old Delhi through maze like streets of the iconic Ancient Bazaar 'Chandni Chowk' and Asia's largest Spice Market before saying goodbye to our morning guides from the Salaam Baalak Trust.

In the afternoon, we experience colonial-era Delhi at Lutyens Delhi including the Mahatma Gandhi Museum - Birla House and the Bangla Sahib Gurudwara temple. At the temple we also volunteer inside its Holy Community Kitchen that daily feeds over 10,000 devotees, pilgrims and homeless. We then visit the ceremonial boulevard Raj Path to witness Sir Edwin Lutyens' finest works from 1920's British Raj Era including colonial government buildings, India Gate, President House and Parliament House. We end the day at Connaught Place named after the Duke of Connaught and surrounds the central park of Delhi.

DAY 3 AGRA

Drive to Agra, the Mughal Era city that is home to the wonder of the world Taj Mahal! After check-in at the hotel, continue with a Heritage Walk inside India's finest Mughal fortress The Red Fort of Agra, an acclaimed UNESCO heritage site and the imperial residence of 16th century rulers of the Mughal Dynasty. In late afternoon we visit Mehtab Bagh or moonlit garden where some of the best views of the Taj Mahal can be found without the crowds. Built in the traditional Charbagh style of Mughal gardens by Emperor Babur, the first emperor of the Mughal dynasty.

DAY 4 TAJ MAHAL - JAIPUR

Start the day with a Sunrise Grand Tour of the Taj Mahal, which was built in 1630 by Mughal Emperor Shah Jahan in memory of his beloved wife Mumtaz Mahal who died giving birth to their 14th child. Combining Islamic, Persian, Ottoman Turkish and Indian design elements, it's an awe-inspiring structure of elegant domes and white marble, which changes colour along with the light – pink at sunrise, pearly white in the afternoon and silver-gold in the full moon. Return to the hotel for breakfast before checking out.

CONT'D

PRE EXTENSIONS

Pre Bookable via Pandaw.com as add on

Continue the jewel of India's crown, the royal heritage state of Rajasthan, and arrive in its pink coloured capital city Jaipur. Enroute visit spectacular Underground Step-wells Chand Baori that lie hidden deep in the village of Abhaneri. This 10th century built zigzagged stepwell is a geometric wonder where Royals used to picnic, and today a popular spot thanks to the film Best Exotic Marigold Hotel. Check-in at your hotel in Jaipur.

DAY 5 JAIPUR

We begin the day early with a visit to the flower market before breakfast. Travel by electric tuk tuk operated by another local NGO The Pink City Rickshaw Company who provide employment and training to women from low-income households in Jaipur.

After breakfast at the hotel we visit some of the most famous sport in Jaipur, including Jaipur City Palace, Palace of Winds, Jantar Mantar Observatory, Amer fort plus spend some time roaming the local bazar. Following a full day of adventure, return to your hotel and enjoy the evening at leisure.

DAY 6 JAIPUR - DEPARTURE

Check out of your hotel and transfer for your domestic flight to your departure point. Upon arrival, transfer to your hotel and enjoy the rest of the evening at your leisure before you join your expedition in the morning.

DAY 7 PANDAW EMBARKATION

Check out of your hotel and transfer for your domestic flight to your departure point. Upon arrival, transfer to your hotel and enjoy the rest of the evening at your leisure before you join your expedition in the morning.

5 STAR SELECTION

The Imperial Delhi

Chosen as India's best 'Luxury Historical Hotel' by World Luxury Hotel Awards 2015, The Imperial is an iconic property in Delhi in the heart of the capital, reminiscent of the halcyon days of the Raj. A luxury hotel with an iconic and awe-inspiring heritage interwoven in colonial elegance, it dwells in its modern delivery of old-style class and magnificence. Built in 1931 by Blomfield, one of Sir Edwin Lutyen's associates and inaugurated by Lord Willingdon in 1936, it is New Delhi's landmark Hotel. The Hotel is steps away from Connaught Place, the renowned shopping district and is very close to the city's major attractions.

Heritage Room

Janpath Lane, Connaught Place, New Delhi, 110001, India

Tel: +91 11 23341234

[Visit Hotel Website](#)



Tajview, Agra-IHCL SeleQtions

Experience the famed splendor of The Taj Mahal at Tajview, Agra. Spread over six acres of manicured gardens and equipped with smart rooms, our hotel near Taj Mahal Agra offers the finest amenities alongside hassle-free services. With friendly staff that are ready to offer impeccable service and hospitality, our 5 star hotel in Agra blurs the lines between business and pleasure.

Taj Ganj, Fatehabad Road, Agra, Uttar Pradesh, 282001

Tel: +91 562-6602000

[Visit Hotel Website](#)



CONT'D

PRE EXTENSIONS

Pre Bookable via Pandaw.com as add on

Raj Palace

The Raj Palace is an extremely convenient place to stay during your visit to Jaipur. Being in the middle of four main palace complexes of Jaipur (Amer, Jaigarh Fort, Nahar Garh Fort and the City Palace complex), it is located at a short distance from all sightseeing and shopping places. Moreover, the fact that it is situated on the main Jaipur-Delhi Road and is only about half a kilometre away from Jaipur-Agra Highway also makes The Raj Palace an ideally located tourist stopover.

Jorawer Singh Gate, Amer Road, Jaipur (302002)

Tel: + 91-141-2634077 / 2634078/ 2634011

[Visit Hotel Website](#)



Hotel Near Departure Point

Depending on the embarkation point of your Pandaw expedition, you will stay in a 5 star hotel located close to your Pandaw ship for an easy embarkation the following day.



OBEROI SELECTION

Oberoi New Delhi

The Oberoi, New Delhi is an iconic luxury 5 star hotel, located in the centre of India's cosmopolitan capital city. The hotel has 220 rooms and suites inspired by Lutyens' New Delhi design, with authentic furnishings and hand-picked artwork. All feature large picture windows which frame unmatched views of Delhi Golf Course on one side and the UNESCO World Heritage site of Humayun's Tomb on the other.

Deluxe Room

Dr. Zakir Hussain Marg, New Delhi - 110 003, India

Tel: +91 11 2436 3030

[Visit Hotel Website](#)



CONT'D

PRE EXTENSIONS

Pre Bookable via Pandaw.com as add on

Oberoi Amarvilas Agra

The Oberoi Amarvilas, Agra enjoys an unrivalled position amongst luxury hotels in Agra, being located just 600 metres from the iconic Taj Mahal. Each of the rooms have uninterrupted views of this ancient monument to love, while elements of the layout and design pay homage to its Mughal splendour. The hotel is approached along a sweeping driveway, verdant with native trees and lit by flaming torches. Just inside, a Mughal style quadrant is ornamented with cascading fountains and framed by an arched passageway and gold leaf frescoes.

Premier Taj View Room
Taj East Gate Road, Agra – 282001, India
Tel: +91 562 2231515
[Visit Hotel Website](#)



OBEROI SELECTION

Oberoi Rajvilas Jaipur

The Oberoi Rajvilas is unique amongst hotels in Jaipur; a royal resort set in a breathtaking thirty two acre oasis of beautiful landscaped gardens, filled with beautiful trees and exotic birdlife. Built around an 18th century Shiva temple where guests can experience chanting with a Hindu priest, meditation and morning yoga, The Oberoi Rajvilas, Jaipur is a haven of mystical peace and natural serenity.

Premier Room
Babaji Ka Modh, Goner Road, Jaipur - 302 031, Rajasthan, India
Tel: +91 141 268 0101
[Visit Hotel Website](#)



Hotel Near Departure Point

Depending on the embarkation point of your Pandaw expedition, you will stay in a 5 star hotel located close to your Pandaw ship for an easy embarkation the following day.



CONT'D

PRE EXTENSIONS

Pre Bookable via Pandaw.com as add on

Rates include

Six nights accommodation at advertised hotels (or similar), including breakfast, excursion and entrance fees as per itinerary, one domestic flight from either Kolkata, Varanasi or Guwahati to Delhi including 20kg check-in luggage.

Meals included

Land tour includes meals as follows; Day 1: Dinner at your hotel, Day 2: Breakfast, Lunch & Dinner, Day 3: Breakfast, Lunch & Dinner, Day 4: Breakfast, Lunch & Dinner, Day 5: Breakfast, Lunch & Dinner, Day 6: Breakfast at hotel, Day 7: Breakfast at hotel.

CONT'D

OPTIONAL PACKAGE ADDONS & OTHER INFORMATION

Free Drinks On Board

Pandaw is happy to announce that our India expeditions are now all inclusive experiences, including local soft drinks, mixers, spirits and beers free of charge. Also included free of charge is our onboard house wine during lunch and dinner only. Onboard purchases of alcoholic beverages will not be possible.

River Conditions Warning!

The rivers you will sail on are subject to seasonal rises and falls of water level, in some places as much as 30 metres. Water levels can change dramatically overnight and a sudden rise can impede our progress upstream considerably and even prevent us from passing under certain bridges. A sudden fall can result in our being unable to get into certain places or go as far upstream as we would hope. Groundings on sandbars are not infrequent and are part of the excitement of any Pandaw expedition. Published itineraries are indicational only and subject to sudden change. In such events alternative itineraries will be provided and we do our best to ensure that if a stop is missed we make up for it with another stop. Passengers are thus forewarned and expected to be flexible and patient. River cruising in Asia can be a dramatic and adventurous experience - not like cruising the controlled waterways of Europe or America. Note also that we operate in areas with little or no developed infrastructure and subject to the strictures of local officialdom. Be prepared for this and it is all more the fun!

Useful Links

BOOKING TERMS & CONDITIONS [CLICK HERE](#) TO FIND OUT MORE

GENERAL INFORMATION & LIFE ON BOARD [CLICK HERE](#) TO FIND OUT MORE

VISA INFORMATION [CLICK HERE](#) TO FIND OUT MORE

FOLLOW US ON SOCIAL MEDIA



facebook.com/pandawriverexpeditions



@pandaw_river_expeditions



@pandaw-river-expeditions



Pandaw Expeditions



PANDAW

UK

 FREEPHONE 0800 038 1029

 uk@pandaw.com

GLOBAL

 +84 (0)28 4458 2618

 information@pandaw.com

NORTH AMERICA

 TOLL FREE 1-877-872-6329

 usa@pandaw.com

AUSTRALIA

 TOLL FREE 1800 207 625

 aus@pandaw.com

NEW ZEALAND

 TOLL FREE 0800 115 250

 aus@pandaw.com

GERMANY, SWITZERLAND & AUSTRIA

 +49 30 3464981 30

 dach@pandaw.com

P A N D A W . C O M